



# KINKÁRA

THE NEW PATH IS AN ANCIENT ONE.

**VISUAL DNA**

A GUIDE TO OUR UNIVERSE

# THIS BOOK IS A VISUAL GUIDE TO KINKÁRA'S DIMENSION.

ALL OF THE GRAPHIC ELEMENTS YOU ARE ABOUT TO ENCOUNTER ARE FILLED WITH UNIVERSAL WISDOM, THEY MUST BE USED IN HARMONY AND COHERENCE ACCORDING TO THE MESSAGE THAT NEEDS TO BE TRANSMITTED.



# CONTENTS

THE STORY OF KINKÁRA

THE MEDICINE WHEEL

LOGO

COLOR ALCHEMY

TYPOGRAPHIC SYSTEM

PHOTOGRAPHIC UNIVERSE

SACRED SIGNAGE

GRAPHIC ELEMENTS

SACRED GEOMETRY

BORUCAN ELEMENTS

COSMIC COLLAGES

# **A playground for the soul, an oasis for the mind and a body realigned.**

A REGENERATIVE RETREAT DESTINATION THAT BRINGS ANCIENT  
INDIGENOUS WISDOM TO MODERN LIFE IN A COLORFUL AND WHIMSICAL  
WAY.

LOCATED IN THE FOOTHILLS OF CERRO CHIRRIPO' SURROUNDED  
BY RIVERS AND WATERFALLS, KINKARA IS THE PERFECT PLACE TO  
RECONNECT WITH YOUR OWN PATH.

REAWAKEN.

# THE STORY OF KINKÁRA

KINKÁRA'S STORY IS TOLD THROUGH THE USE OF A MEDICINE WHEEL, WHICH ESTABLISHES THE PATH TO HEALING IN HARMONY WITH NATURE. IT SETS THE BRAND'S COLOR USE AND IMAGERY.

Each section of the wheel designates a cardinal point and an element. The core represents the fifth and last element: the mysterious Quintessence.

The Wind blows to the North, hand in hand with change, vision, mysticism and clairvoyance. The Great Borucan Quetzal flies in the same direction as the Wind and embodies its characteristics through its green plumage.

The Brave Borucan Jaguar runs in the opposite direction: South. Earth as an element is represented by this strong guardian through wisdom and nurturing. The color yellow embodies the inherent connection between all natural elements.

East, the place where the sun rises is where Fire can be found, slithering through the earth, underneath Mount Chirripó. The experience of Fire can be divided in three different moments: before, during and after. Before the red rises, the atmosphere around us is vibrant and energetic. Then Fire transforms all things in its way, leading to the transformative process of rebirth.

Afterwards, the sun sets West, where the Water rests in Chirripó, the "land of eternal waters". Water is soothing, pure and blue, a perfect balance for Fire. For being such a strong and mutable element, the Nauyaca Waterfalls are the representation of cleansing and soothing.

The Core of the medicine wheel is the fifth and last element, the celestial Quintessence, ether, the unseen. According to ancient knowledge, Quintessence is believed to permeate all throughout nature. It is the 'substance' that composes and surrounds celestial bodies, in other words, the element that ties everything together. It is located in the middle of the medicine wheel as it connects the other four elements. The concept is depicted by the Blue Moon phenomenon and the color purple. It is astral, transcendental and mysterious, yet dynamic.

# THE MEDICINE WHEEL

## PILLARS

### WELLBEING

a rejuvenating program that educates body, mind and soul through art, music, yoga, adventure, breathwork, horse movement, thermal waters, temazcal and medicine food.

### REGENERATIVE HOSPITALITY

awareness for restoring & regenerating through the guest experience, operations & the environment (stewardship)

### ART IN LIFE

curatorial platform that integrates local artistic expression for the enhancement of the experience.

### HEALING FOOD

food as medicine, nutrient dense cuisine, earth table. We follow the sun while honoring the elements & kingdoms

### PERMACULTURE

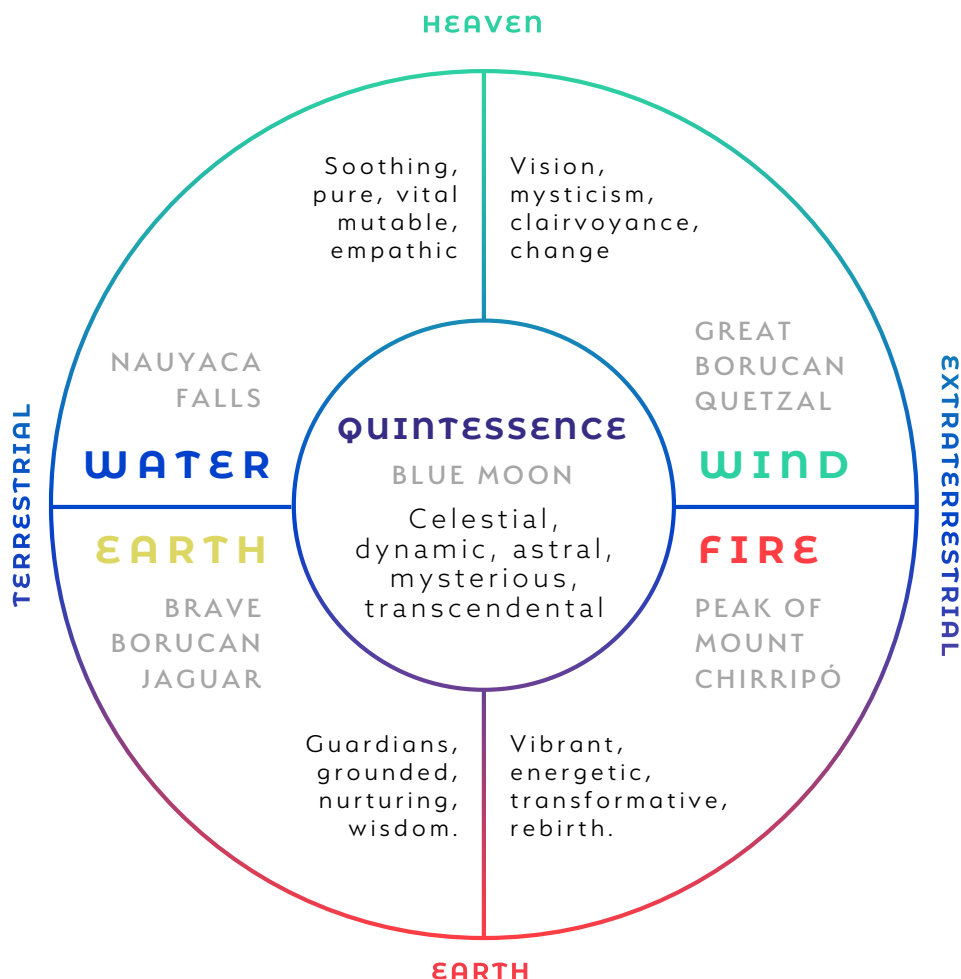
our processes follow nature's paths to reach self-sustaining and regenerative habitats — an ecosystem that provides a cycle of edible life.

### SACRED GEOMETRY

architecture of the universe, the explanation of energy. the mastering of space and time.

### SHAMANISM

for millennia, the power to heal has been in our hands through the shaman, the medicine man who purifies body & soul — honoring the spiritual world.



### ESSENCE:

"THE NEW PATH IS AN

# ANCIENT ONE."

Reconnecting with ancient wisdom.

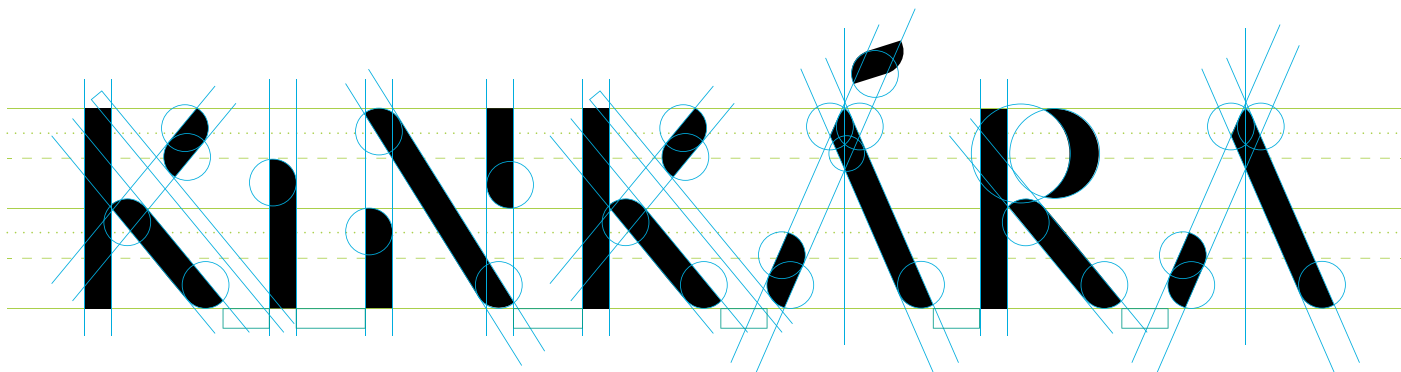
Reconnect with the subtle energy of the rainforest and the sacred plants—ancestral medicine. Embodiment of multidimensional space, harmony and union in all realms, within and beyond.

LOGO

KINKÁRA

THE NEW PATH IS AN ANCIENT ONE.

# CONSTRUCTION



## GEOMETRY IS SACRED.

KINKÁRA IS BUILT WITH INTRICATE LINES AND CIRCLES THAT JOIN TO CREATE A PERFECTLY BALANCED, PLAYFUL AND HIGH-END LOGO.

KINKÁRA

MINIMUM SIZE  
*no slogan*  
3cm x 0.64cm

K

MINIMUM SIZE  
*synthesis*  
5mm x 3.5mm

KINKÁRA

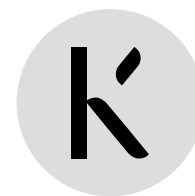
THE NEW PATH IS AN ANCIENT ONE

MINIMUM SIZE  
*slogan*  
4cm x 1.25cm



# LOGO SYNTHESIS

KI MEANS VITAL ENERGY.  
IT IS THE GRAPHIC ELEMENT  
USED FOR SHORT VERSIONS  
OR AVATARS.

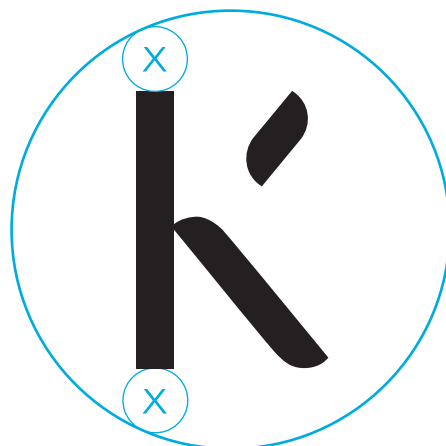
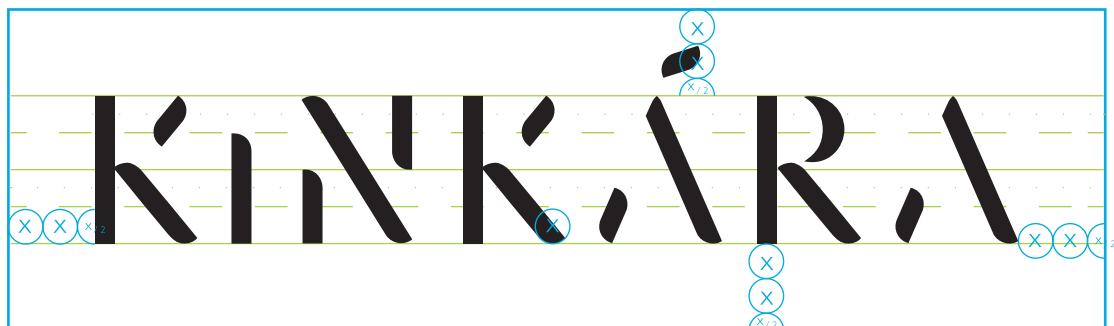


It should only be used  
white or black on:

*primary color palette  
color element gradients  
color alchemy gradients  
grayscale / b&w versions*

# LOGO SAFE ZONE

FOR A CORRECT  
VISUALIZATION THE LOGO  
NEEDS THE FOLLOWING  
MARGINS



# LOGO FORM-COUNTERFORM

B&W VERSIONS OF THE LOGO

KINKÁRA

K

KINKÁRA

THE NEW PATH IS AN ANCIENT ONE.

KINKÁRA K

KINKÁRA

THE NEW PATH IS AN ANCIENT ONE.

# COLOR ELEMENTS & ALCHEMY

OUR COLOR UNIVERSE IS BASED IN THE 5 ELEMENTS  
OF THE MEDICINE WHEEL. WE MIX ELEMENTS TO  
CREATE ALCHEMY THROUGH 3 COLOR GRADIENTS.  
EACH COLOR ELEMENT AND ALCHEMY REPRESENTS AN  
ASPECT OF KINKÁRA'S BRAND SPEECH.

TEMAZCAL

R:255 G:61 B:66

#FF3D42

C:0 M:90 Y:72 K:0

LAVA

R:244 G:121 B:0

#F47900

C:0 M:65 Y:100 K:0



DIRECTION

**EAST**

ELEMENT

**FIRE**

## FIRE COLOR ELEMENTS

INSPIRED IN THE DUALITY OF THE FLAME

Used for communicating warm experiences such as Casa Bulú's kitchen, Temazcal, Firepit or any other places associated to the element.

## GRADIENT

OPACITY 100%

OPACITY 50%

## ATTRIBUTES

Cleansing • Transforming • Rebirth

## GRAPHIC ELEMENT

Peak of Mount Chirripó



CLEAN BREEZE

R: 45 G: 208 B: 161

#2DD0A1

C: 65 M: 0 Y: 50 K: 0

QUETZAL

R: 0 G: 120 B: 115

#007873

C: 85 M: 30 Y: 55 K: 10



DIRECTION

**nORTH**

ELEMENT

**WIND**

## WIND COLOR ELEMENTS

INSPIRED IN THE FLOW OF THINGS.

Used for communicating any outdoor experience that does not include water such as the deck at Casa Bulú, Mandala Garden and Edible Forest.



## GRADIENT

OPACITY 100%

OPACITY 50%

## ATTRIBUTES

Vision • mysticism • clairvoyance

## GRAPHIC ELEMENT

Great Borucan Quetzal





DIRECTION

**WEST**

ELEMENT

**WATER**

## WATER COLOR ELEMENTS

INSPIRED IN THE CLEANSING PROCESS

Used for communicating any experience that includes water such as the creek, River Village, shower rooms and restrooms.



## GRADIENT

OPACITY 100%

OPACITY 50%

## ATTRIBUTES

Soothing • Purifying • Mutable

## GRAPHIC ELEMENT

Nauyaca Waterfalls







DIRECTION

**SOUTH**

ELEMENT

**EARTH**

## EARTH COLOR ELEMENTS

INSPIRED IN THE GUARDIANS OF EARTH

Used for communicating experiences at Casa Bulú, El Morén, Mandala and Family Village or earth related topics such as grounding or hiking trails.

## GRADIENT

OPACITY 100%

OPACITY 50%

## ATTRIBUTES

Guardian • Grounding • Nutritive

## GRAPHIC ELEMENT

Brave Borucan Jaguar







DIRECTION

CORE

ELEMENT

QUINTESSENCE

## QUINTESSENCE COLOR ELEMENTS

INSPIRED IN THE DUALITY OF THE UNIVERSE

Used for communicating mystic experiences and topics such as astrology, night activities or full moon circles.

## GRADIENT

OPACITY 100%

OPACITY 50%

## ATTRIBUTES

Celestial • Astral • Trascendental

## GRAPHIC ELEMENT

Blue Moon



# COLOR ALCHEMY

COLOR ELEMENTS UNITED TO  
CREATE MAGICAL GRADIENTS

WIND



WATER



FIRE



PRIMARY  
COLOR  
ALCHEMY

HEAVEN

THIS COLOR GRADIENT  
GLOBALLY REPRESENTS KINKÁRA  
AS A PEACEFUL, SPIRITUAL AND  
SOOTHING EXPERIENCE

It should be used on avatars, main color  
applications and as a photography filter for the  
following:

- Spiritual development focused on mind and  
energetic work (Eg. meditation, reiki,  
biomagnetism, breathwork)
- Soothing water/wind concepts or activities  
(Eg. waterfalls, plant watering, birds)
- Cosmic/universal topics, astral bodies,  
mysticism.

USED AS A COMPLEMENTARY  
REPRESENTATION OF THE  
PHYSICAL ACTIVITY THAT WILL  
ALSO TAKE PLACE.

It should be used on cover photo, secondary  
color applications and as a photography filter  
for the following:

- Transformational activities focused on  
physical body and ancestral work.(Eg.  
temazcal, ceremonies, incense burning,  
massage)
- Anything related to nature and permaculture  
except watering.(Eg. gardens, crops, hiking,  
horseback riding)
- Motion, grounding, food, spa.

QUINTESSENCE



FIRE



EARTH



SECONDARY  
COLOR  
ALCHEMY

EARTH

## ELEMENT EVOKING



WIND

QUETZAL

DECK  
GARDEN



WATER

NAUYACA

BATHROOMS  
SHOWERS



FIRE

CHIRRIPO

CASA BULÚ  
KITCHEN  
TEMAZCAL



EARTH

JAGUAR

EL MORÉN  
CAMPSITE  
LOUNGE  
CASA BULÚ



QUINTESSENCE

BLUE MOON

ILLUMINATION  
LAMPS

# TYPOGRAPHIC system

DIFFERENT OPTIONS OF TYPOGRAPHY GIVE USERS THE POSSIBILITY OF CREATING A NOTICEABLE HEIRARCHY WHEN WRITING OR DESIGNING. FOR BEST TYPOGRAPHIC PRACTICES REVIEW THE USES OF EACH FAMILY.

\*SOME ARE ONLY USED IN CAPITALS FOR TITLES AND SUBTITLES.

# KINKÁRA

THE NEW PATH IS AN ANCIENT ONE.

---

SLOGAN

AZO SANS LIGHT

*Tracking 320*

THE NEW PATH IS AN ANCIENT ONE

A

AZO SANS

LIGHT | *LIGHT ITALIC* ONLY CAPITALS

A B C D E F G H I J K L M N O P Q R S T U V W X Y Z

Â Ê Ô

1 2 3 4 5 6 7 8 9 0

' ? ' " ! " # % ( ) [ ] { @ } / & < - + ÷ × = > \$ € £ ¥ ¢ : ; , . \*

LIGHT FOR SLOGAN, SUBTITLES, EXPRESSIONS, NAMES  
TRACKING 220

*LIGHT ITALIC FOR SUBTITLES*  
TRACKING 220

B R E A K F A S T  
F O R Y O U R  
S O U L

Bb

Serenity

EXTRALIGHT | LIGHT | *LIGHT ITALIC* | MEDIUM | **BOLD**

A B C D E F G H I J K L M N O P Q R S T U V W X Y Z

a b c d e f g h i j k l m n o p q r s t u v w x y z

Â Ê Ô â ê ô 1 2 3 4 5 6 7 8 9 0

` ? ' " ! " # % ( ) [ ] { @ } / & < - + ÷ × = > \$ € £ ¥ ¢ : ; , . \*

**BOLD CAPS FOR TITLES**

**TRACKING 220**

Medium for important texts

TRACKING 40 / 120

Light version for bodies of text

TRACKING 40 / 120

*Light italic version for quotes*

TRACKING 40 / 120

# ANTIROBOTIC PROBIOTICS

C

Montserrat Alternates  
BOLD - ONLY CAPITALS

A B C D E F G H I J K L M N O P Q R S T U V W X Y Z

1 2 3 4 5 6 7 8 9 0

' ? ' " ! " # % ( ) [ ] { @ } / & < - + ÷ × = > \$ € £ ¥ ¢ : ; , . \*

BOLD CAPS FOR TITLES  
SPACING 220

# BREAKFAST FOR YOUR SOUL

## MORNING ABUNDANCE

### **SOUL ELIXIR**

Seasonal fruit juice

### **GAIA'S GIFTS**

Watermelon, papaya, banana,  
manzana de agua

### **G-BOWL**

Homemade gluten free granola.

### **TERRESTRIAL DELIGHTS**

Muffins of the day | Breakfast bread

### **NAUYACA TABLE**

Selection of local cheeses

### **DITSÓ PANCAKES**

buttermilk and flax seed pancake  
with spiced honey



# PHOTOGRAPHIC UNIVERSE

INSPIRATIONAL EXAMPLES OF HOW TO  
CAPTURE KINKÁRA'S ESSENCE THROUGH THE  
LENS.

TIMES OF DAY ARE SPECIFIED TO ENHANCE  
THE EXPERIENCE BUT MAY VARY ACCORDING  
TO WEATHER CONDITIONS.

THE PHOTOGRAPHER MUST BE PLAYFUL AND  
DEEPLY CONNECT WITH THE SACRED SPACE  
AT ALL TIMES.

SUNRISE  
6AM-ISH  
DIFFUSE LIGHT  
PLAYING WITH  
NATURE



HARD NOON  
11-1 PM  
HARDEST LIGHT OF DAY  
WORKS FOR THE BEST  
LIGHT-SHADOW EFFECTS

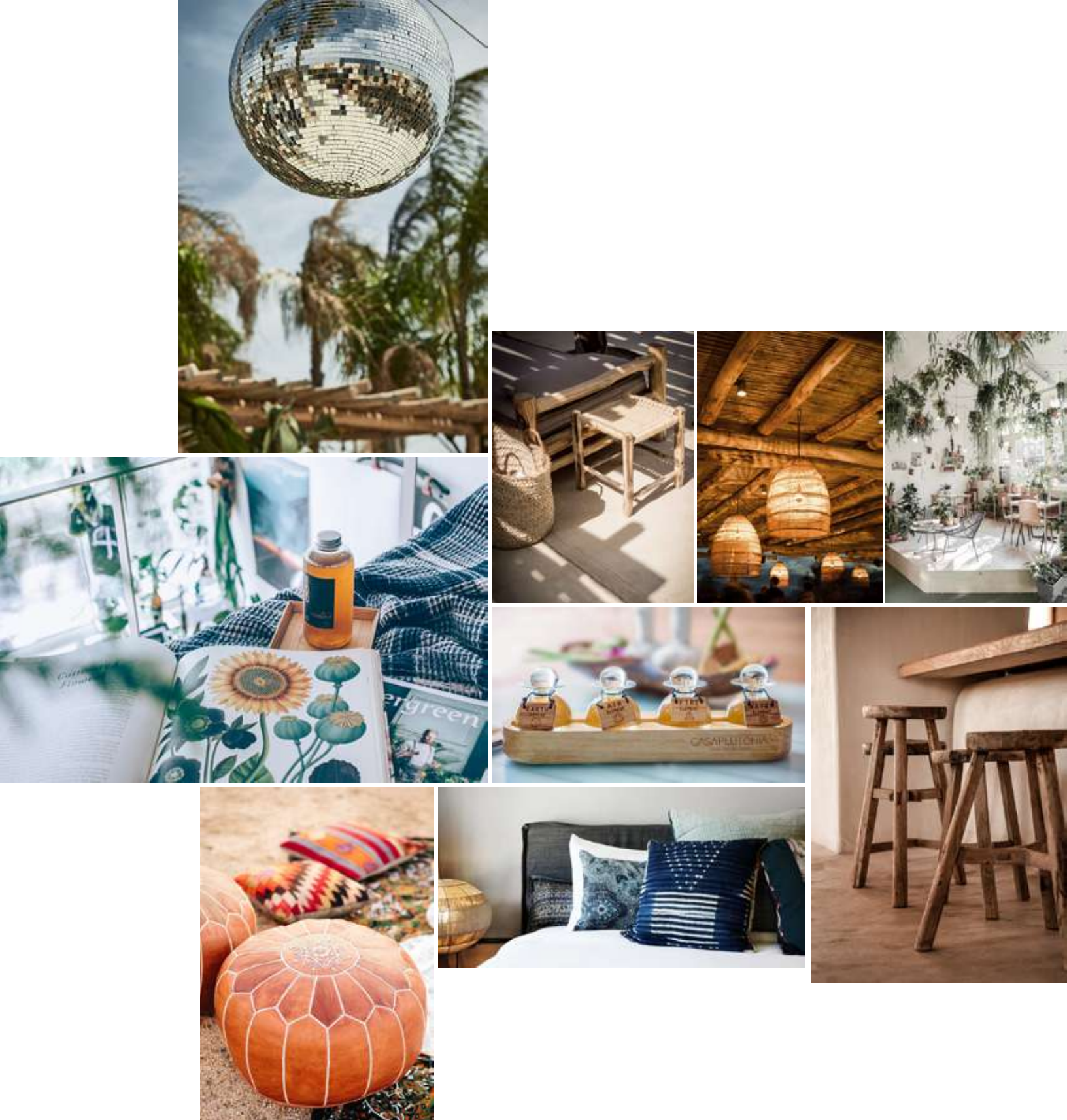


LAZY AFTERNOONS  
2-4PM  
HARD LIGHT  
STARTS GOING DIFFUSE  
AND WELCOMING  
THE SUNSET

TECHNIQUE: CHIAROSCURO

# Light and shadow

PLAY WITH LIGHT AND THE SHAPES IT CREATES  
WHEN IT HITS ORGANIC OBJECTS AT DIFFERENT TIMES OF DAY



# Detail oriented

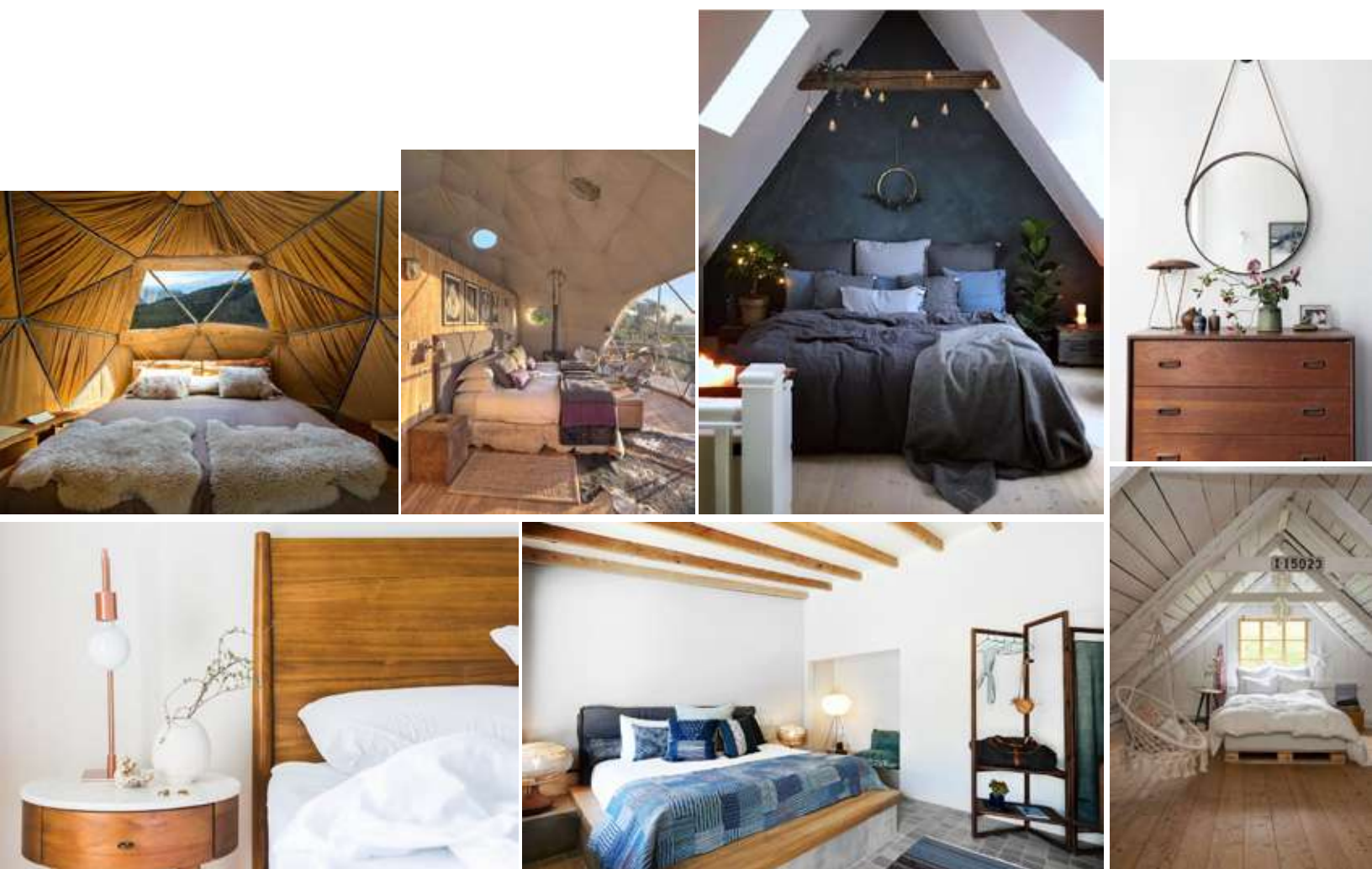
FOCUS ON THE COHERENCE, ORDER AND BEAUTY  
CREATED BY THE ELEMENTS





# Exteriors

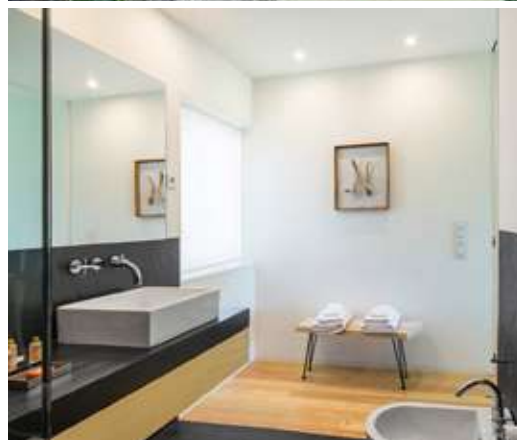
EXTERNAL VIEWS OF THE SACRED SPACES, PATHWAYS OR GREEN SPACES, IN THE RIVER PLAY WITH LIGHT AND WATER AT HARD NOON.



# Interdimensional capsules

PORTRAY INTERESTING ANGLES THAT SUGGEST SACRED GEOMETRY.





# Bathrooms

INTERESTING ANGLES. WATER ELEMENT MUST BE PRESENT TO SHOW CLEANSING AND TRANSFORMATION.



# Casa Bulú

EAT • REST • CHILL  
TERRACE - LOUNGE - DINING SPACE. FRESH, LOTS OF LIGHT





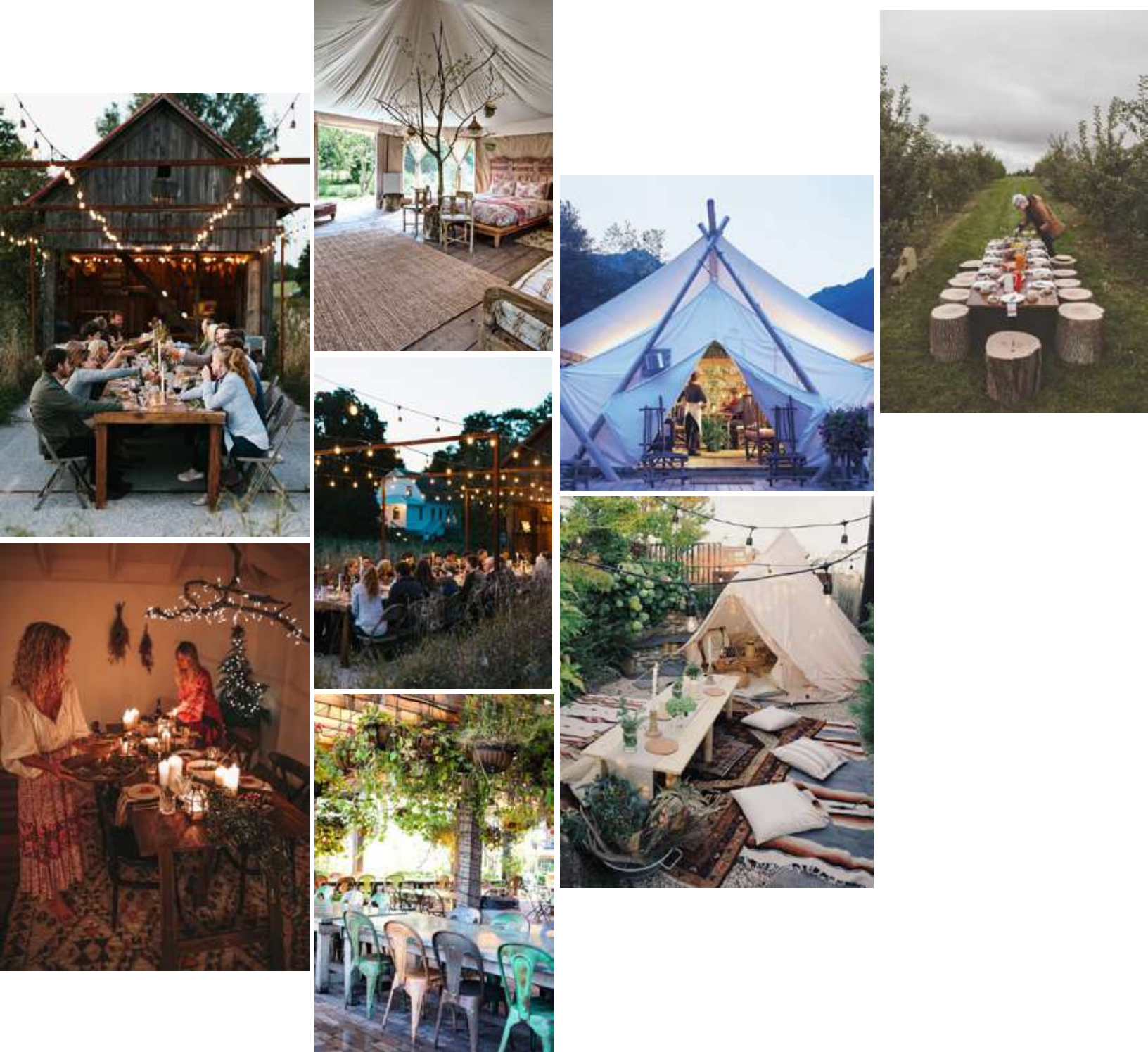
CLASSES,  
SHARING SPACE,  
WORKSHOPS



# El Morén

OUR PAVILLION MUST TRANSMIT A RELAXING ESSENCE THROUGH HIGH ANGLES AND PORTRAYING VERY COMFORTABLE SPACES





# Dining tent

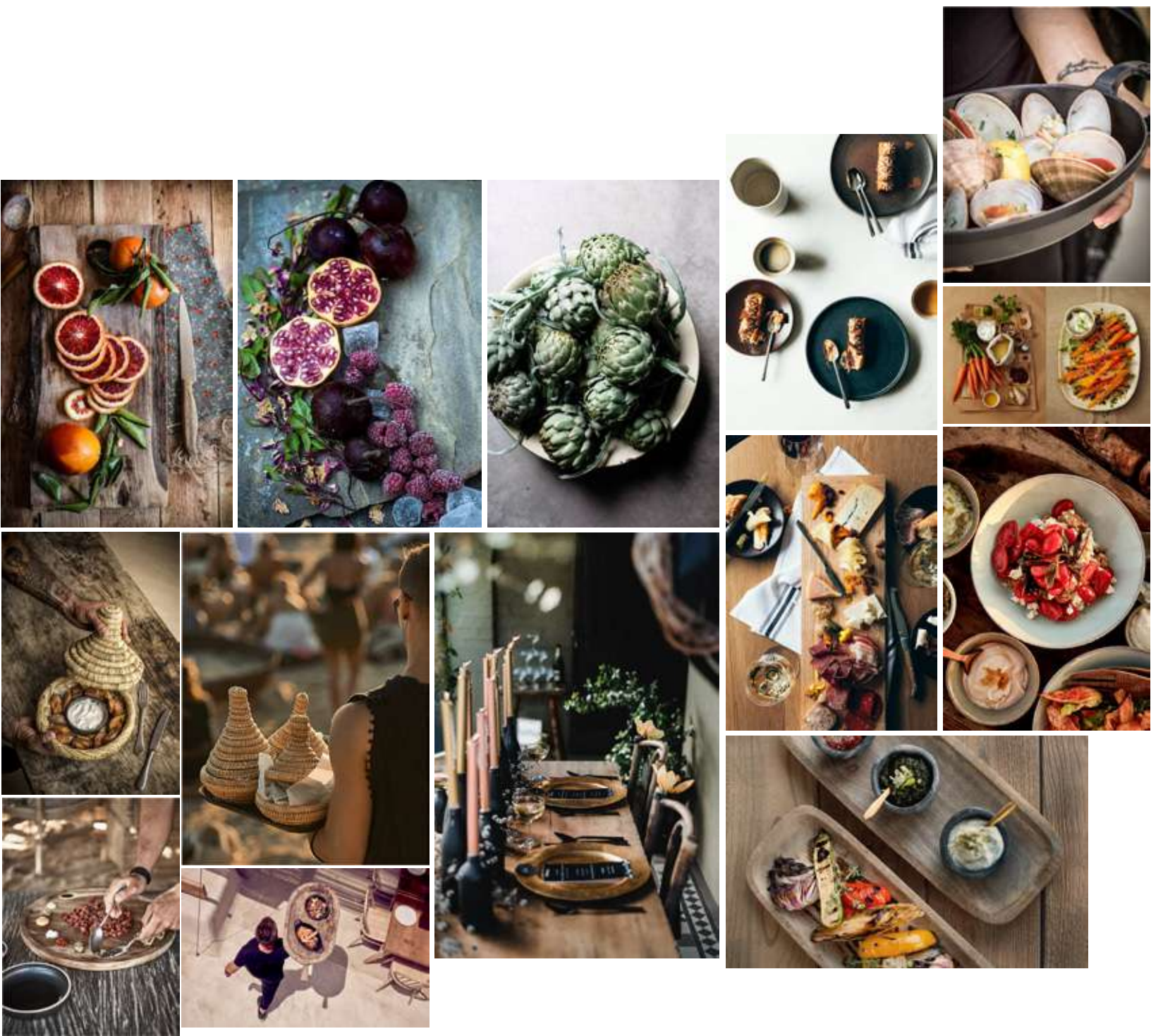
SHARING SPACE, A NATURAL AND FRIENDLY VIBE  
NIGHT GATHERING SHOTS ARE ENCOURAGED.



# Sunset + night shots

MAGIC HAPPENS AT NIGHT IN KINKÁRA. NIGHT SURREALISM AND CONNECTION WITH THE UNIVERSE.





# Food shots

FOOD MUST BE PORTRAYED AS IS: SIMPLE, CASUAL AND NATURAL.  
BRING THE CONCEPT "FROM THE GARDEN TO YOUR TABLE" TO LIFE.

*FOOD PHOTOGRAPHY MUST NOT SEEM REFINED, UPSCALE OR OVER THE TOP.*





TO EXPLAIN THE DAY TO DAY LIFE AT KINKÁRA,  
PORTRAY THE FARM TO TABLE CONCEPT WITH THE  
HUMAN ELEMENT INCLUDED WHEN POSSIBLE.

# **SACRED SIGNAGE**

PRESENT AND FUTURE INSPIRATION TO  
ENGAGE AND ADD EXPERIENCE TO THE  
JOURNEY IN OUR DIMENSION.





RE-PURPOSE  
WOOD  
+  
COLOR  
ENGRAVING  
/MARKING



BARE-MATERIAL  
FREE-STANDING  
SHORT TEXTS



SIMPLICITY  
CONTRAST  
EASY MANUFACTURING

# Pathways

SUBTLE SHAPES AND MATERIAL THAT BLENDS IN WITH THE ENVIRONMENT. COLORS AND CONTRAST BETWEEN SHAPES TO FOCUS THE VIEWER'S GAZE



# Secret spaces

MONOLITHIC • PURE • HIGH CONTRAST • SMALL  
EYE CATCHING AT PROXIMITY





ACCENTS  
CONTRAST WITH  
EMPTY SPACE

ENGRAVING  
PURITY  
WOOD + WOOD



EXTERNAL VIEWS  
WOOD DIRECTION  
SUBTLE

# Façades

FOR EXTERNAL SIGNAGE OF ARCHITECTURAL STRUCTURES





# Interior spaces

CONNECTION WITH NATIVES • PATTERN AND TEXTURE  
CONTRAST WITH NATURE

# **GRAPHIC ELEMENTS:**

SACRED GEOMETRY

GEOMETRY IS THE RATIONAL EXPLANATION  
OF REALITY. IT IS THE BASE OF ANY  
EXPRESSIVE CREATION IN KINKÁRA.

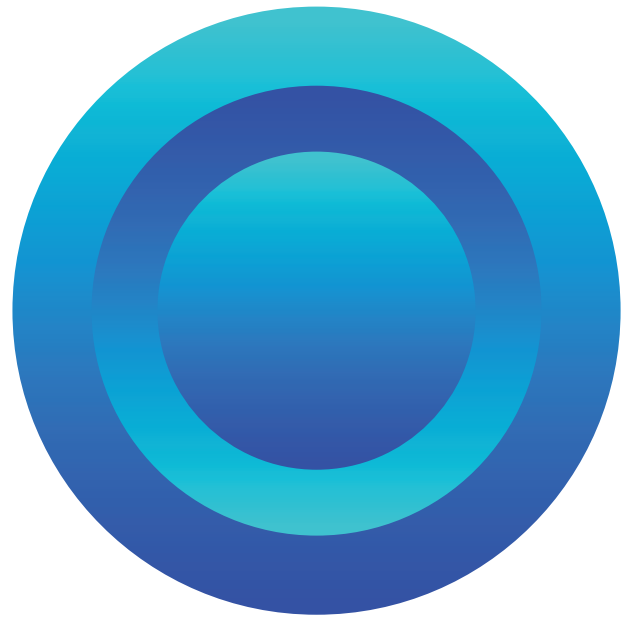
# BASIC GEOMETRY

BASIC GEOMETRIC SHAPES MAY  
WORK AS:

- Document covers
- Iconographic elements
- Signage
- Any special needs that can be met through shapes.



**KINKÁRA BADGE**  
PRIMARY COLOR ALCHEMY  
SUGGESTED USE:  
DOCUMENT COVERS



**PURIFIYING BADGE**  
WATER ELEMENT GRADIENT  
SUGGESTED USE:  
HEALING VILLAGE'S SERVICE GUIDE



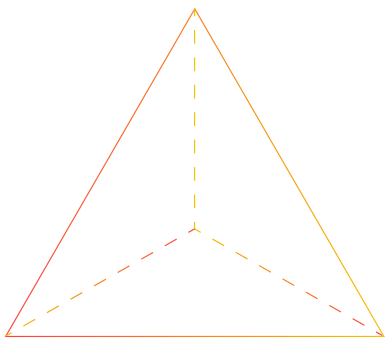
**BURNING BADGE**  
FIRE ELEMENT GRADIENT  
SUGGESTED USE:  
TEMAZCAL OR FIREPIT INVITE

# PLATONIC SOLIDS

## DIET ICONOGRAPHY

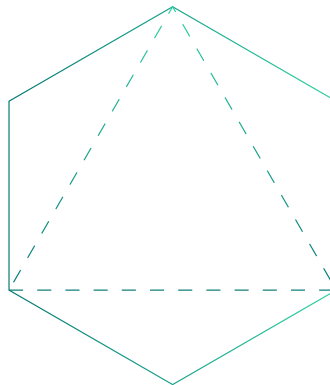
LOCATED IN EVERY MENU, IN CASA BULÚ AND VERBALLY EXPLAINED BY WAITERS AT EVERY MEAL.

CREATE A KEY FOR EMPLOYEES AT CASA BULÚ



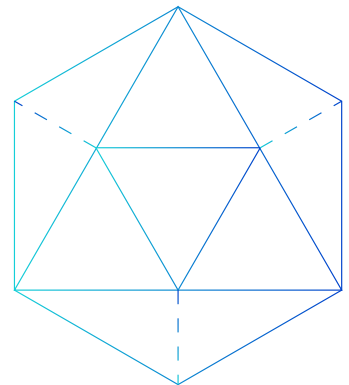
### GLUTEN FREE

TETRAHEDRON  
SYMBOLIZES  
FIRE



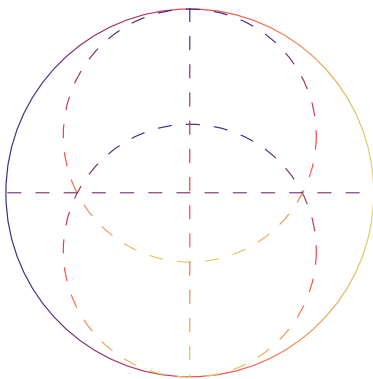
### VEGAN

OCTAHEDRON  
SYMBOLIZES  
AIR



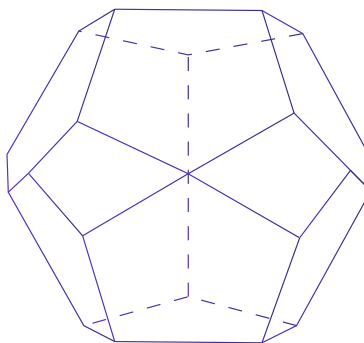
### PLANT PARADOX

ICOSAHEDRON  
SYMBOLIZES  
WATER



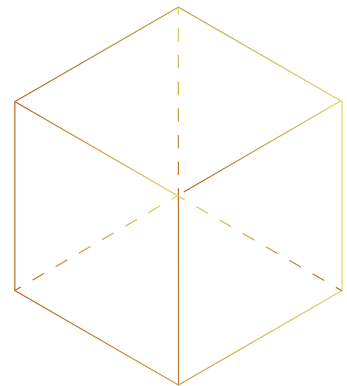
### DAIRY FREE

VESICA PISCES  
SYMBOLIZES  
THE MOTHER:  
FEMININE ENERGY



### NUT FREE

DODECAHEDRON  
SYMBOLIZES  
QUINTESSENCE



### VEGETARIAN

CUBE  
SYMBOLIZES  
EARTH

# GEOMETRIC ALCHEMY

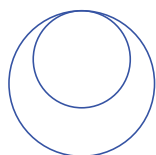
## SPATIAL ICONOGRAPHY

USED FOR SIGNAGE OF THE DIFFERENT SACRED SPACES.



### EARTH

Casa Bulú  
Piedra Agora  
Mandala Village  
Mandala Garden



### WATER

Shower rooms/Bathhouse  
River Village  
Trail to waterfall  
Trail to river



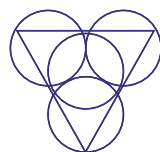
### FIRE

Firepit  
Temazcal  
Dining Tent



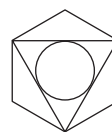
### WIND

Aerodrome  
Trail to edible forrest



### QUINTESSENCE

El Morén



C  
A  
S  
A  
  
B  
U  
L  
Ú

# BORUCAN MASKS

WHEN GEOMETRY MEETS ANCIENT WISDOM  
MAGIC MASKS AND TEXTILE PATTERS CAN BE CREATED.

THESE ARE EXPRESSIVE GRAPHIC ELEMENTS THAT CAN  
BE USED AS ACCENTS OR TO ADD MYSTICISM TO AN  
EXPERIENCE.

A FRACTAL IS A SEMIGEOMETRICAL OBJECT WHOSE  
BASIC STRUCTURE, FRAGMENTED OR IRREGULAR, IS  
REPEATED IN DIFFERENT SCALES. MANY NATURAL  
STRUCTURES ARE FRACTALS.

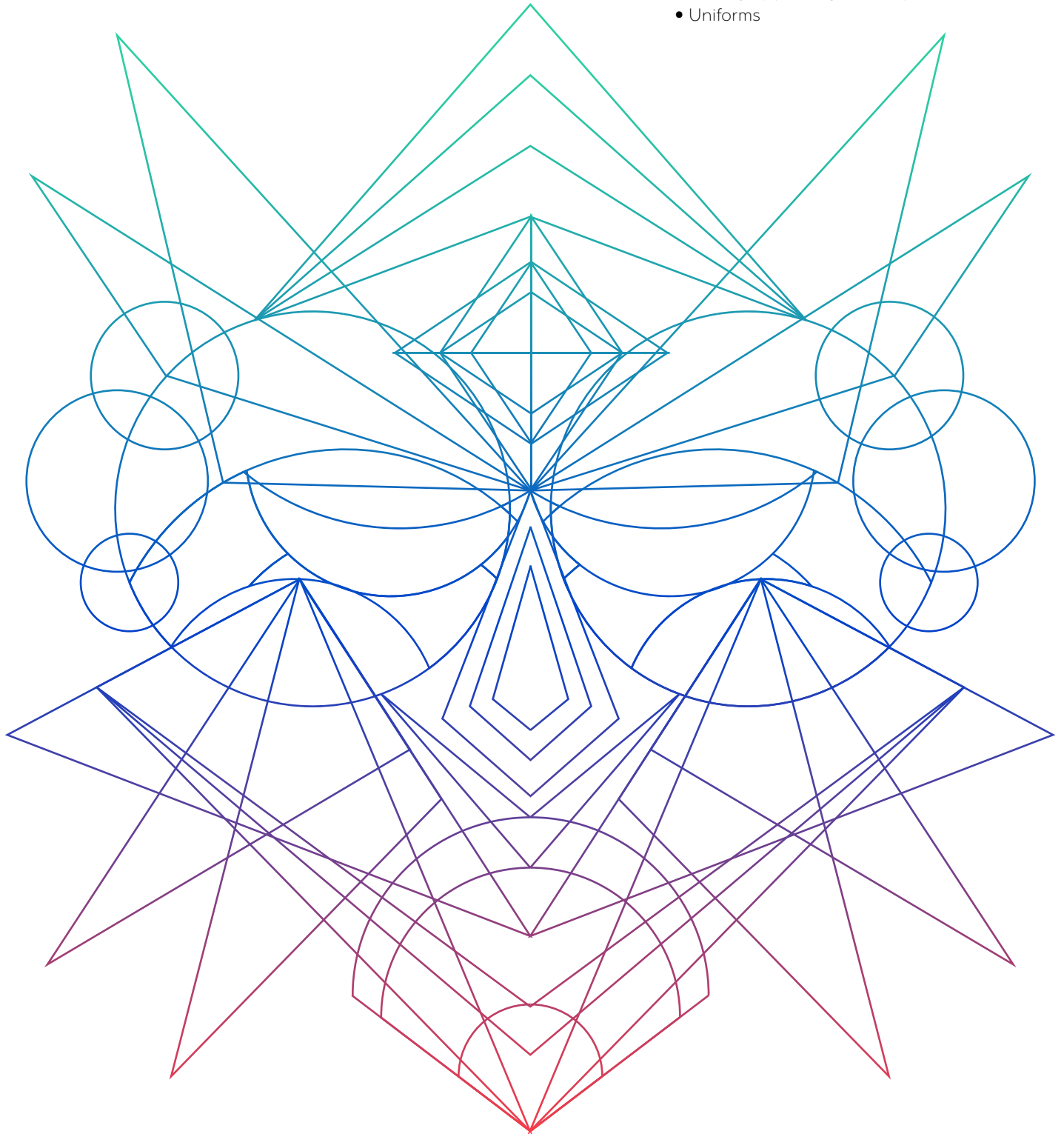
OUR GRAPHIC LINE REFERENCES SACRED GEOMETRY  
PATTERNS TO DEPICT ELEMENTALS THROUGH LINES  
AND REFLECTIONS. AS MAIN GRAPHIC ELEMENTS THEY  
SET THE BRAND'S PERSONALITY.

OUR LOCATION SUMMONS ANCIENT WISDOM FROM  
BORUCAN NATIVE ANCESTORS, ONE OF THEIR  
TRADITIONS WERE THE BORUCAN MASKS.  
THERE ARE 2 VARIATIONS TRADITIONAL AND  
ECOLOGICAL MASKS.

# DIABLITO ELEMENTAL

KINKÁRA'S DIABLITO  
PRIMARY COLOR ALCHEMY  
CAN BE USED FOR:

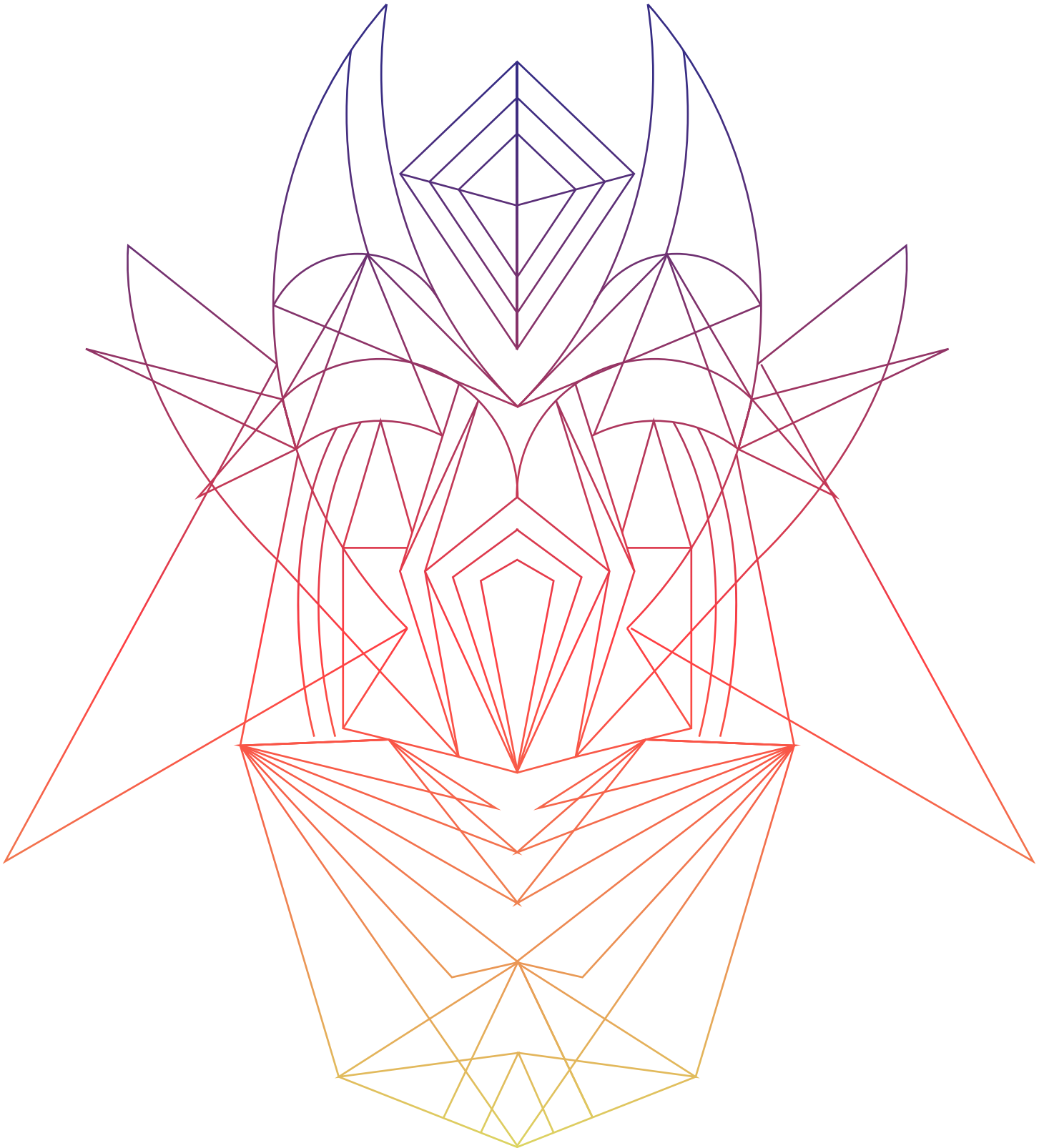
- Watermark background on documents
- Photography/collage overlay
- Uniforms



# ECOLOGICAL ELEMENTAL

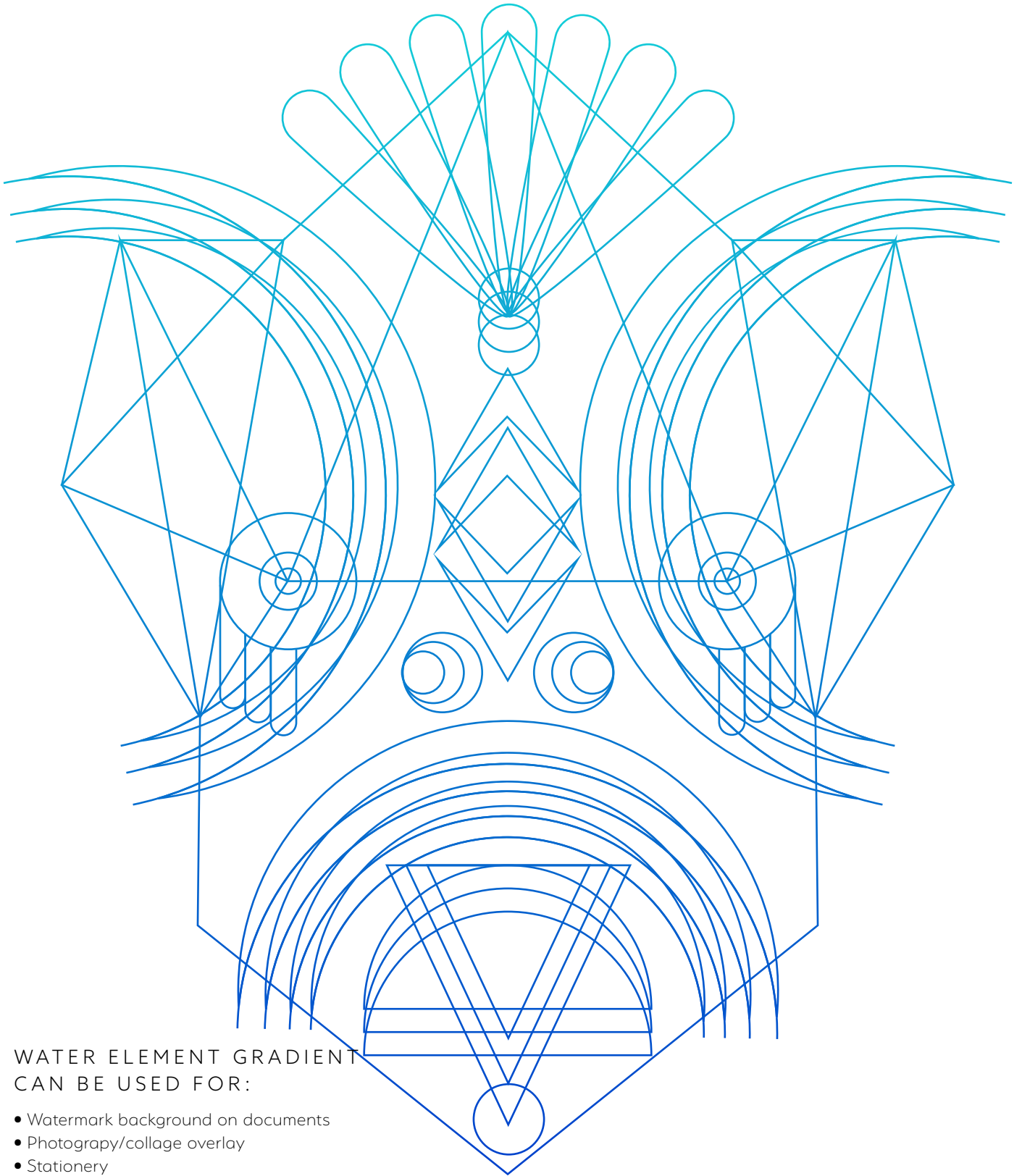
NATURE'S WHISPER  
SECONDARY COLOR ALCHEMY  
CAN BE USED FOR:

- Watermark background on documents
- Photography/collage overlay
- Stationery





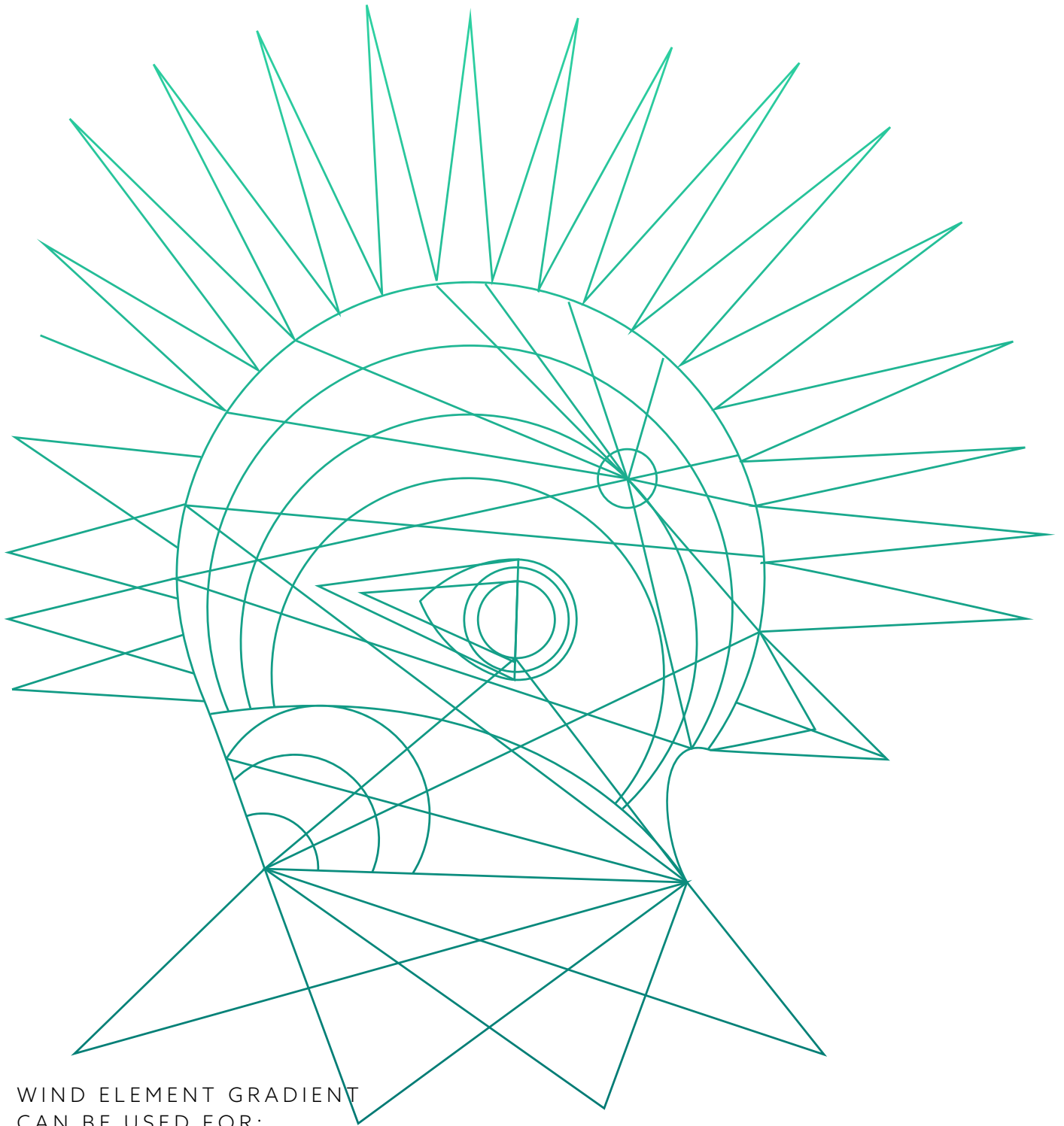
# WATER ELEMENTAL



WATER ELEMENT GRADIENT  
CAN BE USED FOR:

- Watermark background on documents
- Photography/collage overlay
- Stationery
- Communications related to water element

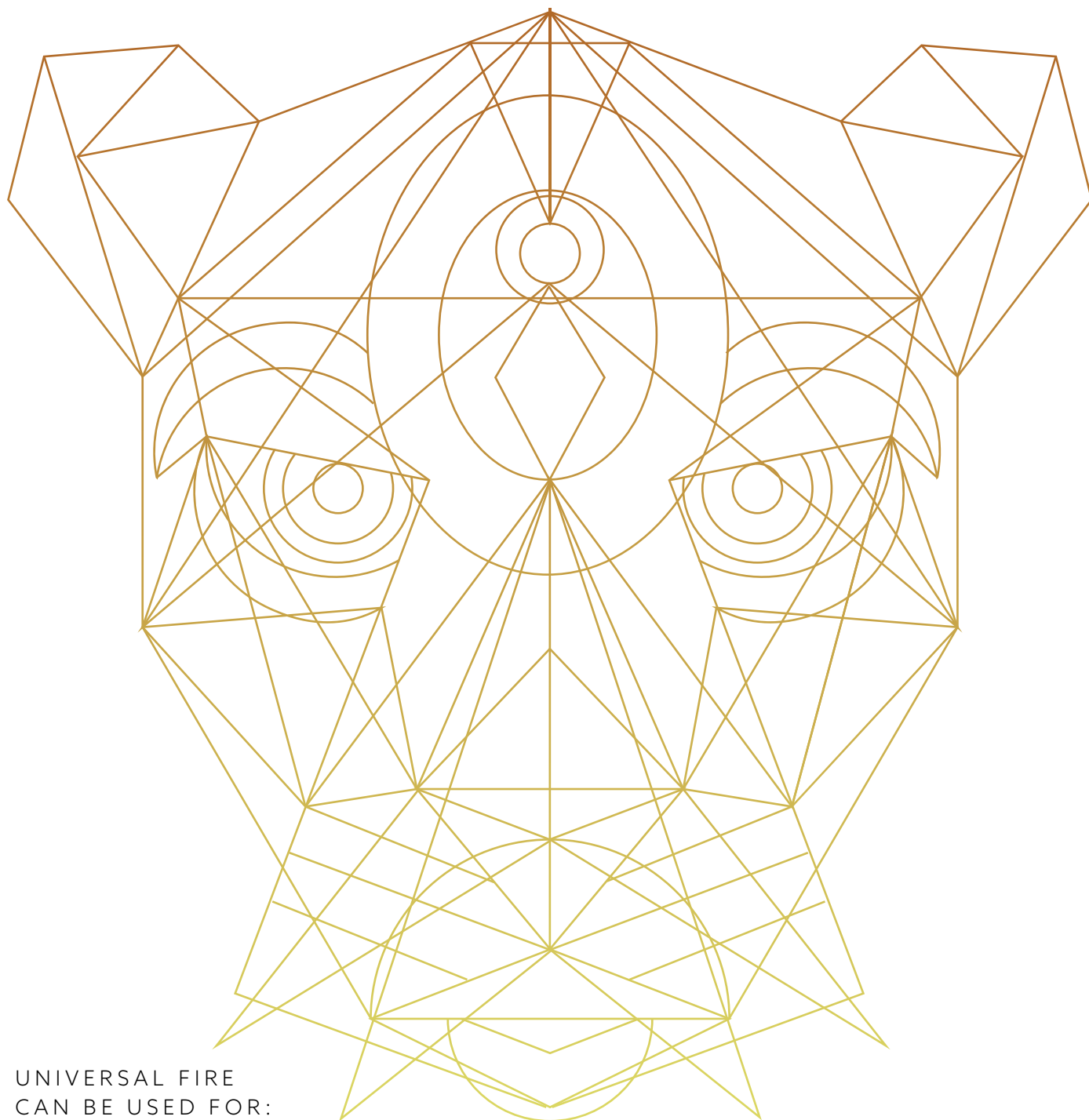
# WIND ELEMENTAL



WIND ELEMENT GRADIENT  
CAN BE USED FOR:

- Photography/collage overlay
- Stationery
- Document covers
- Invitations/postcards

# EARTH ELEMENTAL



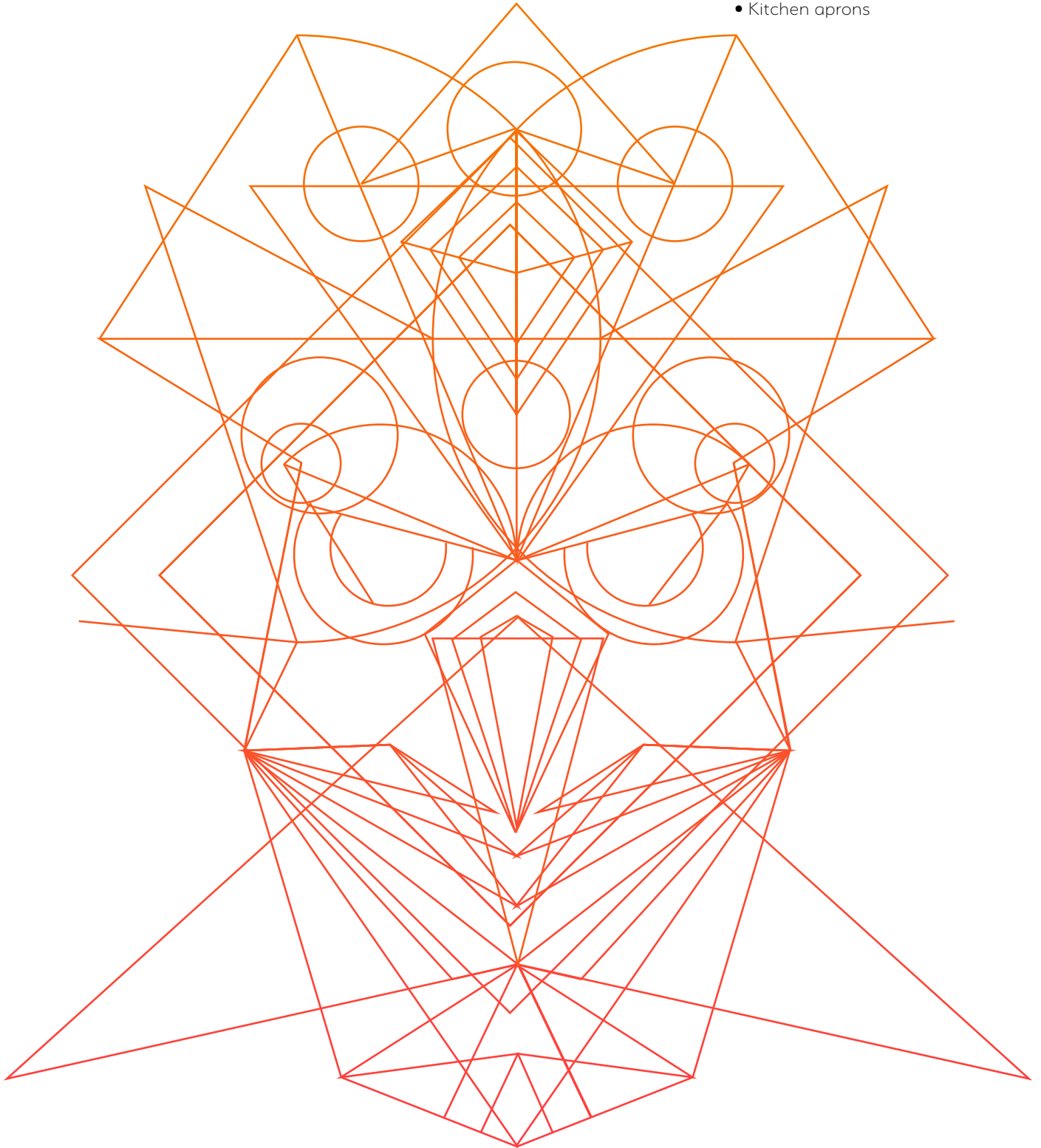
UNIVERSAL FIRE  
CAN BE USED FOR:

- Photography/collage overlay
- Stationery
- Document covers
- Uniforms

# FIRE ELEMENTAL

FIRE COLOR ALCHEMY  
CAN BE USED FOR:

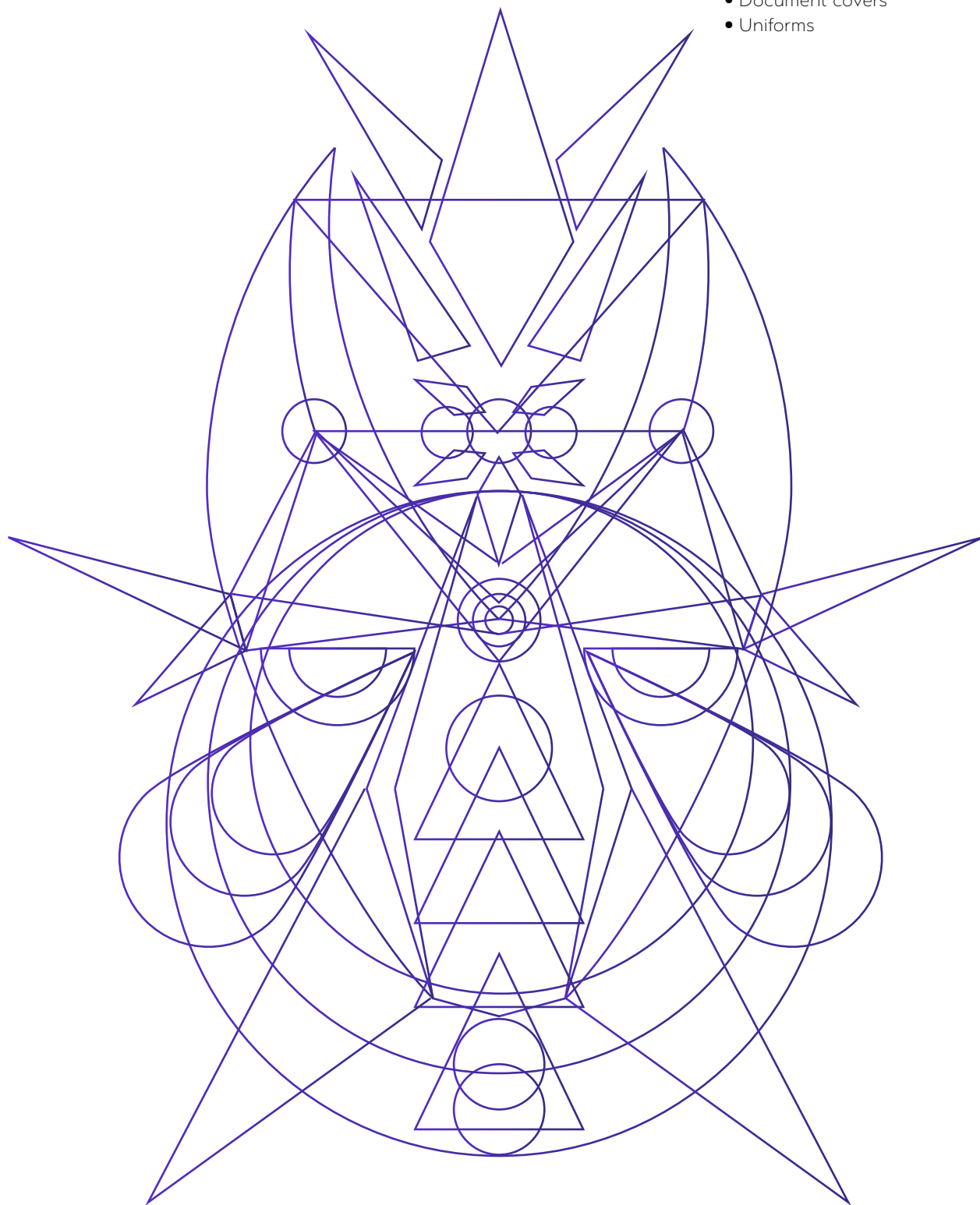
- Photography/collage overlay
- Stationery
- Document covers
- Uniforms
- Kitchen aprons



# QUINTESSENCE ELEMENTAL

QUINTESSENCE  
COLOR ALCHEMY  
CAN BE USED FOR:

- Photography/collage overlay
- Stationery
- Document covers
- Uniforms





A person is lying on their back on a dark carpeted floor, with their knees bent and feet flat on the floor. They are wearing a dark, patterned top and light-colored pants. A complex, white geometric overlay, resembling a Sri Yantra or a similar sacred geometry diagram, is centered over the person. The overlay consists of a large circle, a square, and a series of interlocking triangles and lines. The background is a dimly lit room with other people lying on the floor in the background.

k

THE NEW PATH IS AN ANCIENT ONE



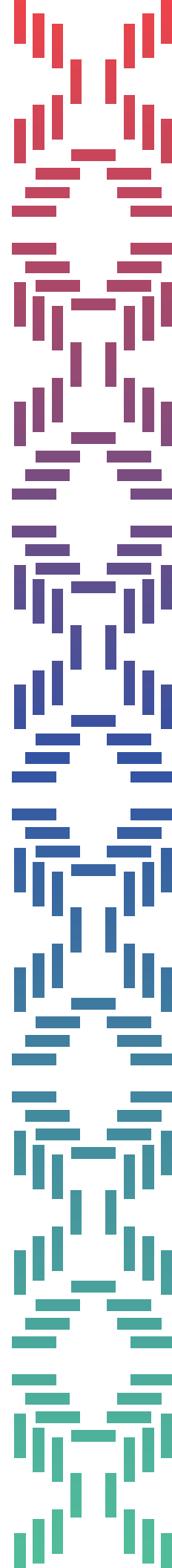
# BORUCAN TEXTILES

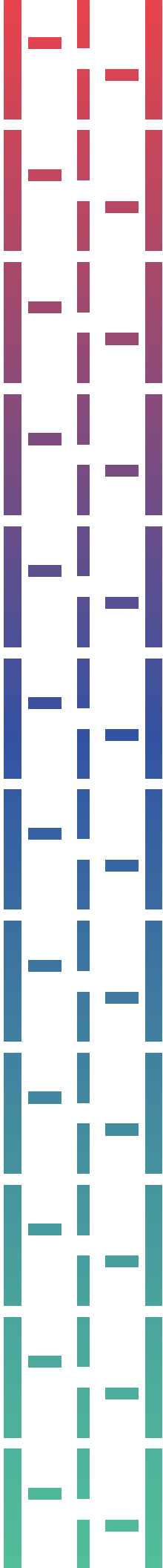
BORUCAN NATIVE ANCESTORS USED  
TEXTILES AS AN ANCIENT TRADITION.

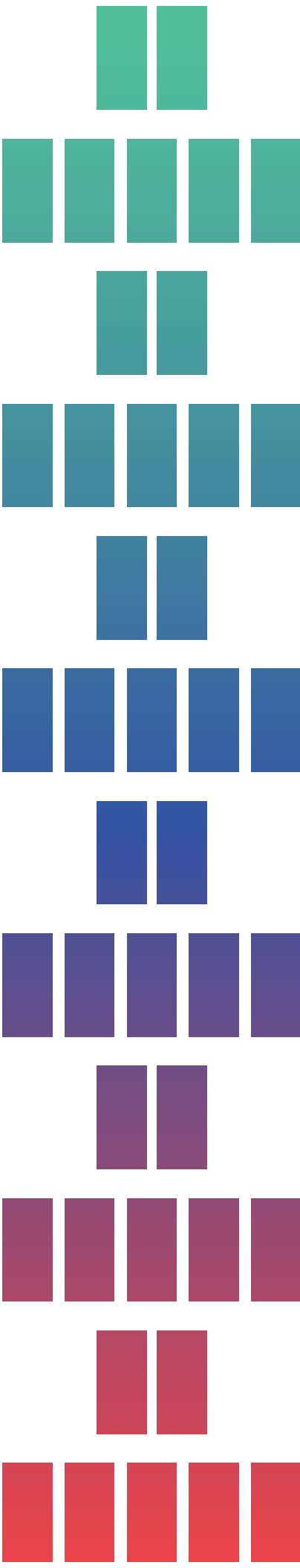
WEAVING PATTERNS ARE PART OF THE  
GRAPHIC LANGUAGE. OUR ATTEMPT  
IS TO CREATE AN EVERGROWING  
INDIGENOUS TEXTILE DIGITAL LIBRARY.

THESE CAN BE USED AS

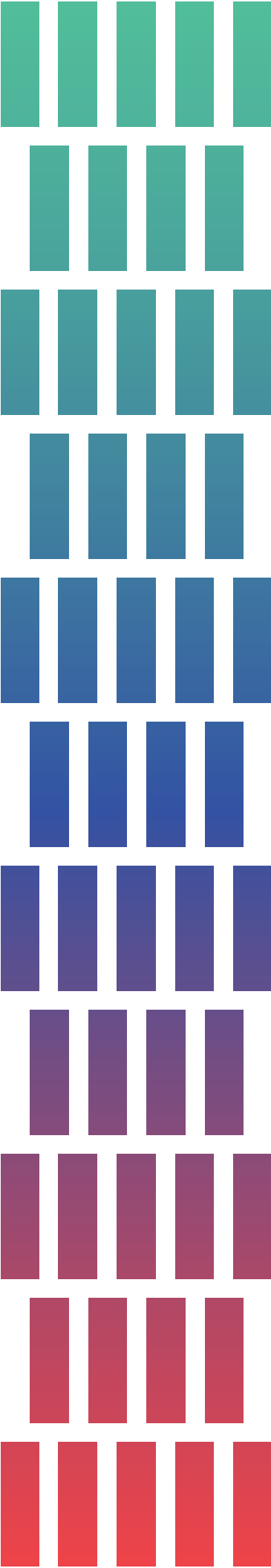
- Accents
- Common thread in documents or stationery.
- Airport signs











# GRAPHIC ALCHEmy:

COSMIC COLLAGES

AN INVITATION TO CREATE VISUAL  
ALCHEMY THROUGH THE HARMONIOUS  
AND COHERENT MIX OF THE DIFFERENT  
GRAPHIC AND COLOR ELEMENTS  
PRESENTED THROUGHOUT THE DNA.

## COSMIC COLLAGES MAY BE USED AS

- Decorative posters
- Postcards
- Social Media communication
- Document covers
- Promotional items



## *SUMMONING THE 5 ELEMENTS*

### 5 ELEMENTS GRAPHIC MIX

Jaguar • Chirripó • Universe • Moon • Quetzal • Fire • Water • Quintessence



## COSMIC COLLAGES MAY BE USED AS

- Decorative posters
- Postcards
- Social Media communication
- Guest Book cover
- Promotional items



*AWAKEN THE FIRE WITHIN*

FIRE ELEMENT GRAPHIC MIX

Jaguar • Chirripó • Universe • Moon • Traditional Borucan Mask





## *FLY*

WIND ELEMENT GRAPHIC MIX

Quetzal • Chirripó • Universe • Basic Geometry • Ecological Borucan Mask





## *ANCIENT WISDOM*

ALCHEMY GRAPHIC MIX

Nature • Borucan Textiles • Basic Geometry • Sacred Geometry





*EARTH'S HEARTBEAT*

EARTH ELEMENT GRAPHIC MIX

Jaguar • Waterfalls • Universe • Basic geometry • Moon • Rain

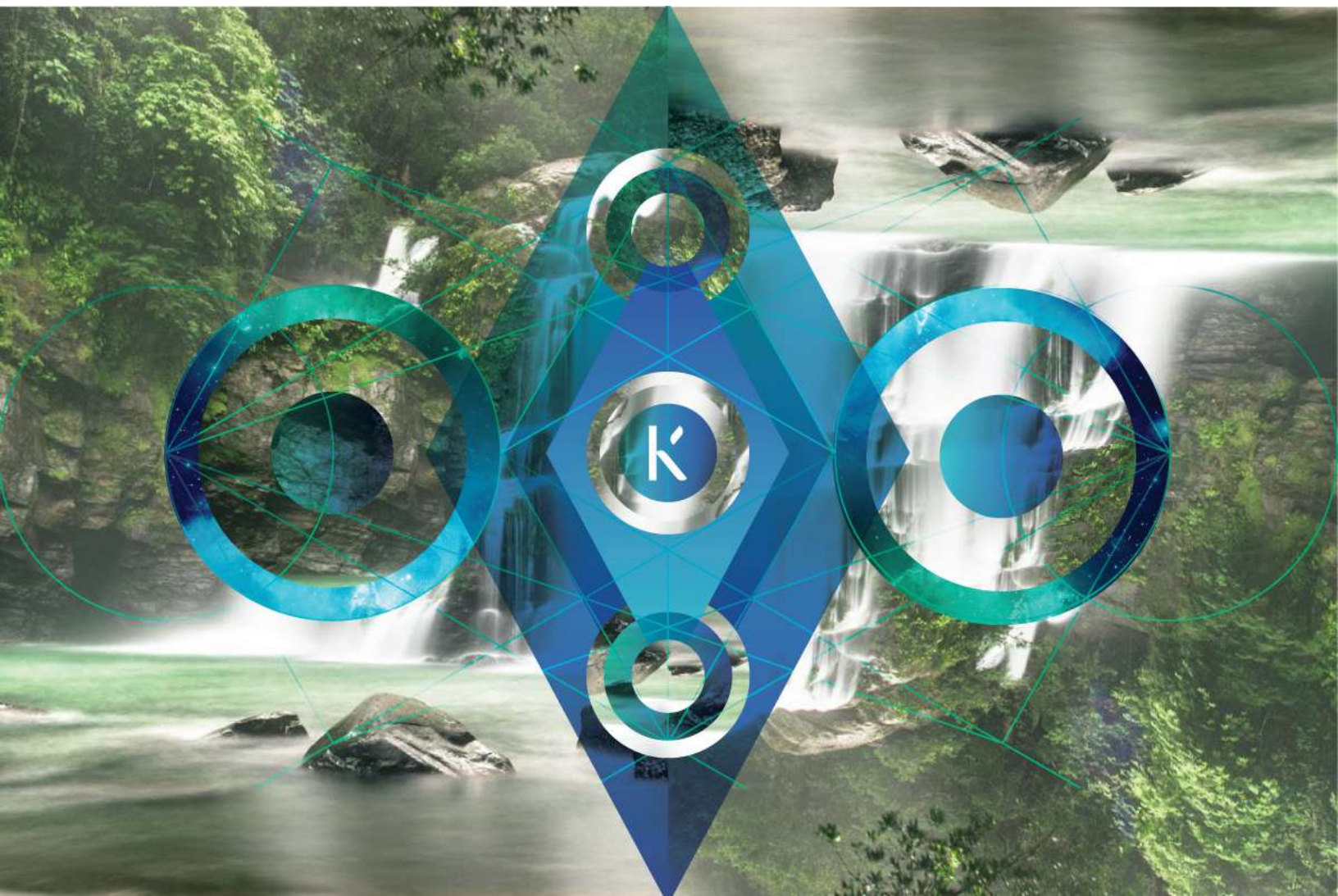


## *SACRED MOUNTAINS*

ALCHEMY GRAPHIC MIX

Chirripó • Universe • Basic Geometry • Sacred geometry





## CLEANSING WATERS

WATER ELEMENT GRAPHIC MIX

Waterfalls • Universe • Basic geometry • Nature's Web